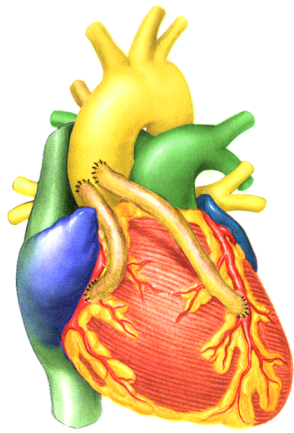
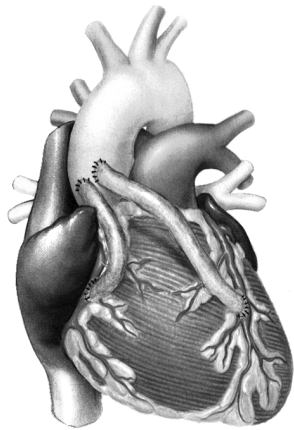


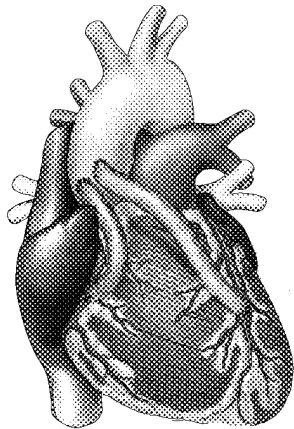
Supplementary material for Richness-Preserved Manga Screening



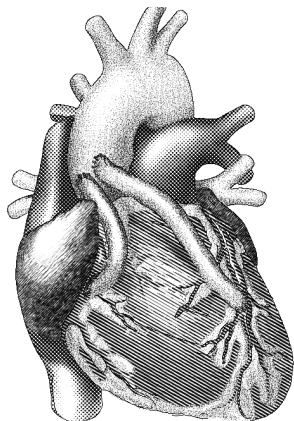
(a) Original



(b) Color2Gray



(c) Half-tone from Color2Gray
(overlaid with edges)



(d) Our result

Figure S1. The "heart"



(a) Original



(b) Color2Gray



(c) Hatching from Color2Gray
(overlaid with edges)

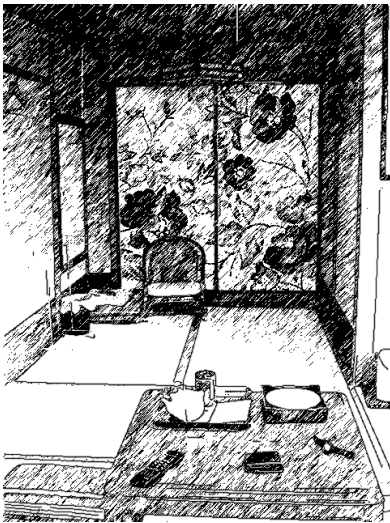


(d) Our result

Figure S2. A pop art



(a) Original



(b) Hatching (overlaid with edges)

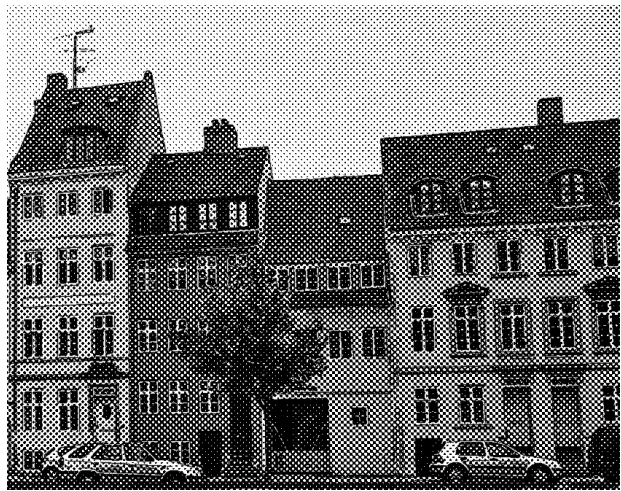


(c) Our method

Figure S3. Tea room



(a) Original



(b) Halftoning (overlaid with edges)

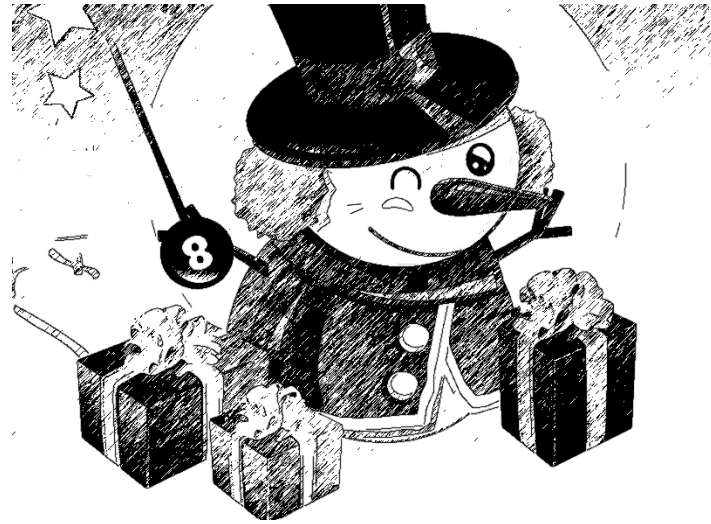


(c) Our method

Figure S4. Colorful Street



(a) Original



(b) Hatching (overlaid with edges)



(c) Halftoning (overlaid with edges)



(d) Our method

Figure S5. Snowman cartoon